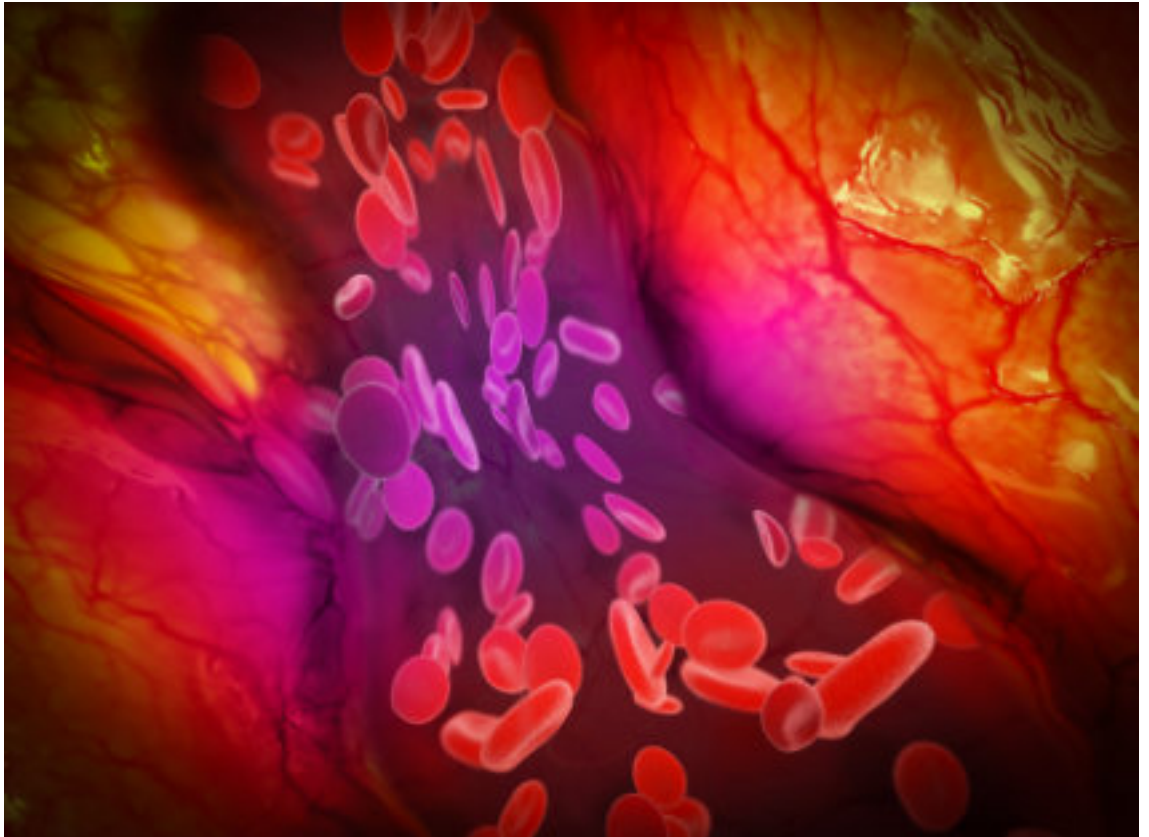


# Segmental arterial mediolysis



**Vascular disease**



# What Is Segmental Arterial Mediolyysis (SAM)?

- SAM causes narrowing of mesenteric arteries
- It is a rare, non-inflammatory vasculopathy of medium-sized visceral arteries, including the superior mesenteric artery (SMA)
- SAM produces stenosis, dissection, or occlusion of mesenteric vessels through medial degeneration and smooth muscle loss, leading to ischemia or hemorrhage
- . Diagnosis relies on CTA/MRA showing dissections, aneurysms, or stenoses without atherosclerosis or inflammation; management is individualized, with medical therapy (antihypertensives, antiplatelets) for stable cases and endovascular or surgical intervention for rupture, dissection, or ischemia

## References

Naidu SG, et al. Segmental Arterial Mediolyysis: Abdominal Imaging of and Disease Course in 111 Patients. *AJR Am J Roentgenol.* 2018 Apr;210(4):899-905.